

Program Wizard - Evaluation with sample data

STARTED

CLOSED

BigPicture Program Wizard

> 1. Evaluate with sample data

▼ 2. Basic data

PROGRAM NAME
Evaluate Program II

PROGRAM LEADER
Grzegorz [SoftwarePlant]

2020/02/11 - 2020/08/11

Private ? Public ?

Briefcase A

Create new JIRA Project ?
Select existing JIRA Project to use

Issues data will be synchronized correctly only if you add [configuration fields](#) to project edit screens. Read more about it in [Documentation](#).

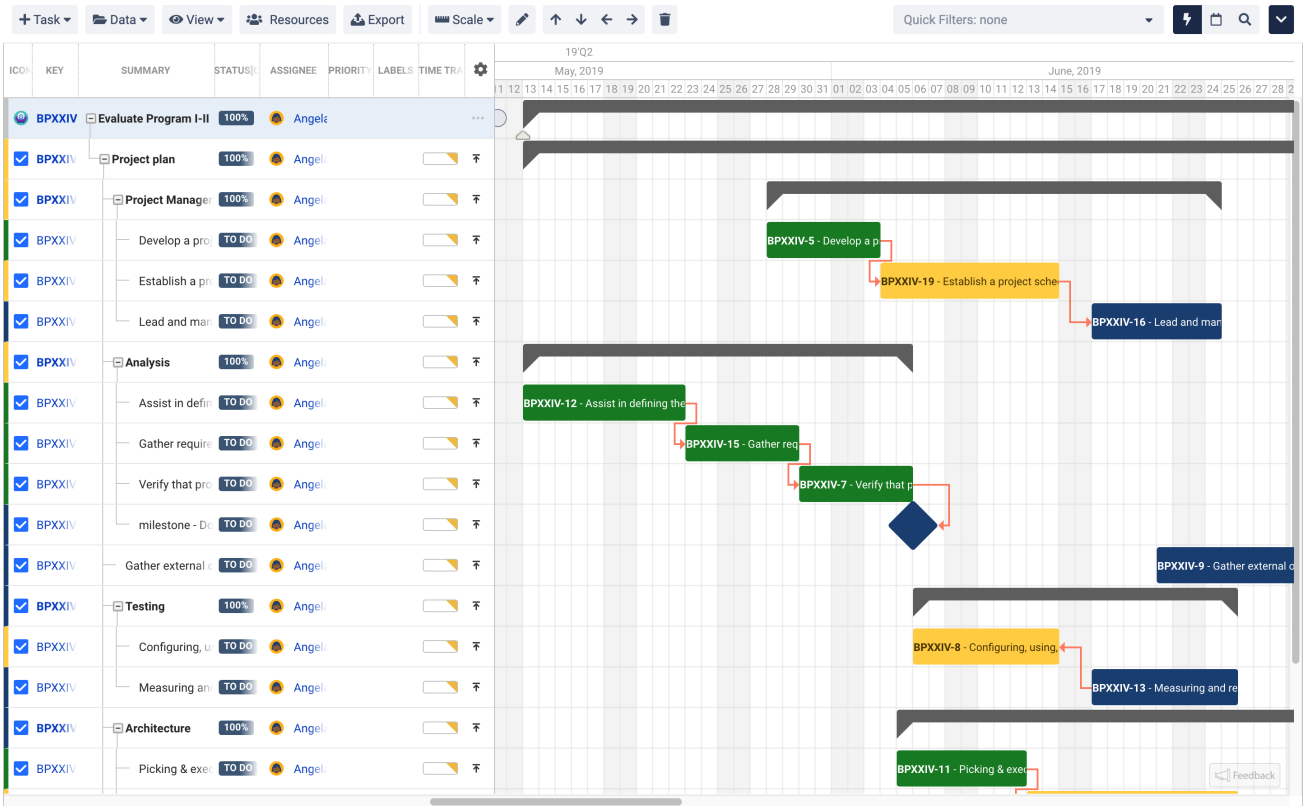
Let's get it started!

Evaluation with sample data

Create a new Program with a new project for evaluation, training and practice purposes.



To evaluate with sample data you need to create a Jira project first. We recommend using the Scrum project type in Jira.



Feature	Description
Basic data	<p>Enter the following information and decide if you want to create a new Jira project or clone tasks to an existing project:</p> <ul style="list-style-type: none"> • Program name • Program leader - has access to the Program configuration by default. • Program duration - determines the Agile schedule and has no impact on the tasks. • Privacy settings - when set to private other users, except for the app's admin, will not see the Program in the Program Manager view. • Avatar