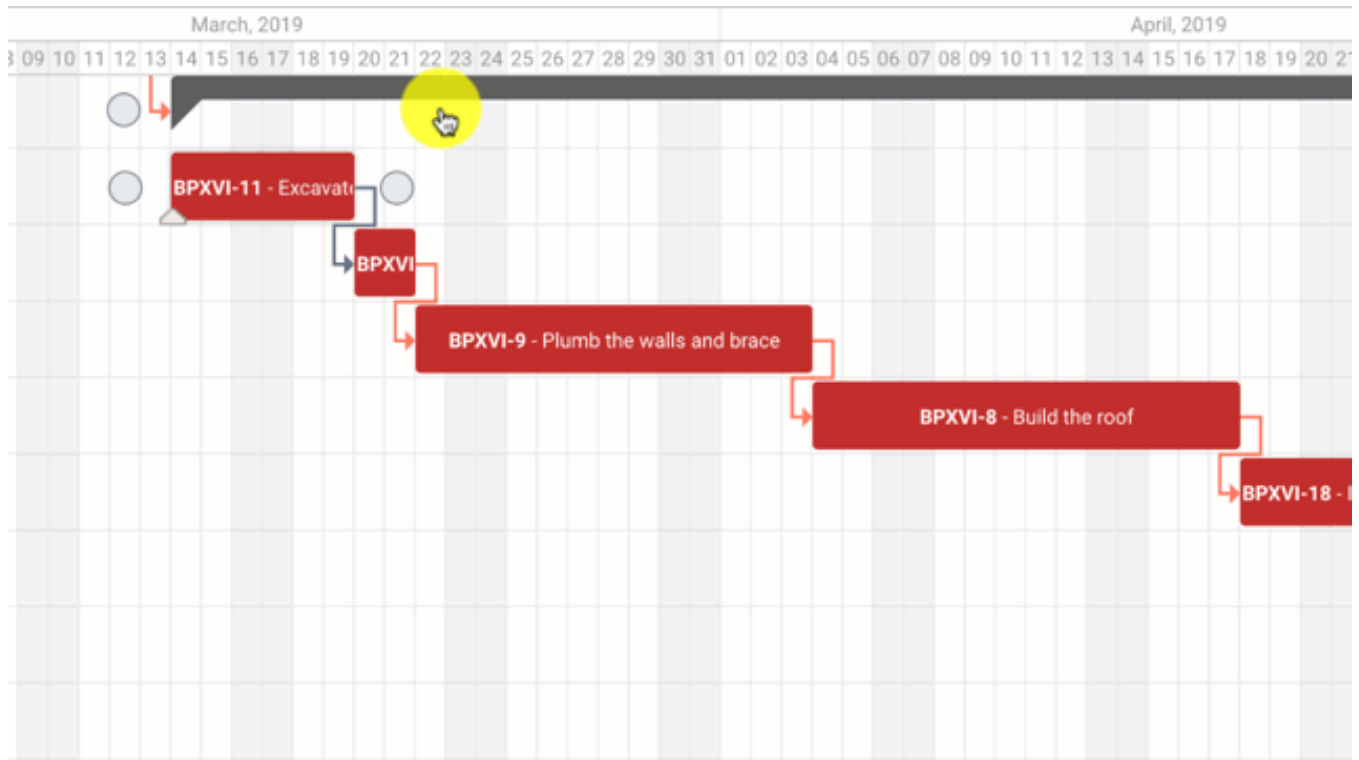


Gantt - Task modes - Manual

This page contains macros or features from a plugin which requires a valid license.

You will need to contact your administrator.



Manual

This mode is designed for planning manually and when the tasks structure is created it will not impact any tasks.

Tasks will behave according to the following rules:

1. Parent in "manual mode" shows the start / end date of the issue as set in Jira.
2. When the children exceed the start / end date of the parent tasks the recalculated position will be indicated with a red-dotted line and yellow background.

To learn about other task modes go to the [Task modes](#) page.